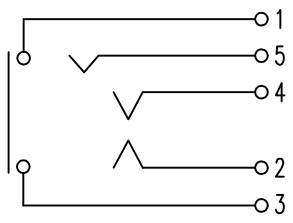


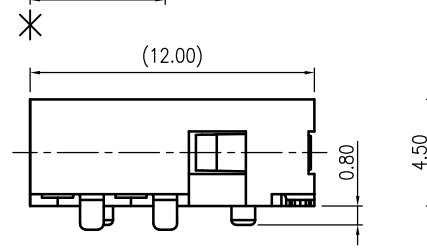
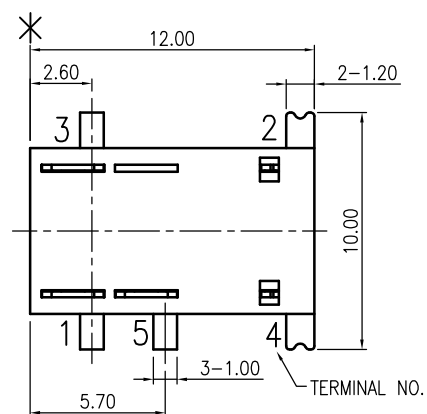
1                      2                      3                      4                      5                      6

A

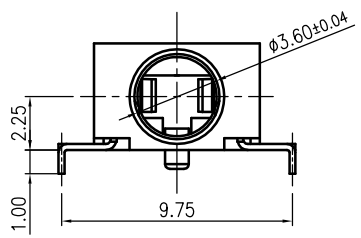


Circuit diagram

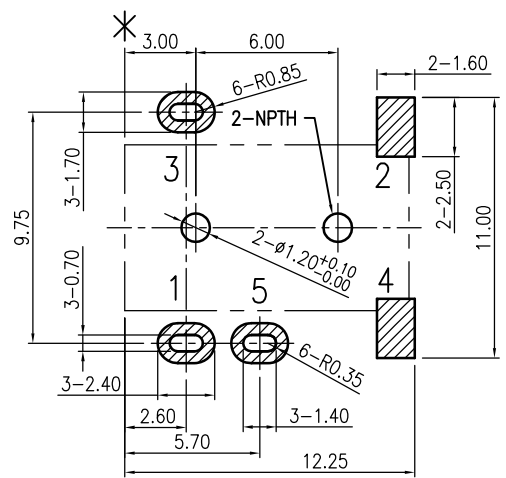
B



C



D



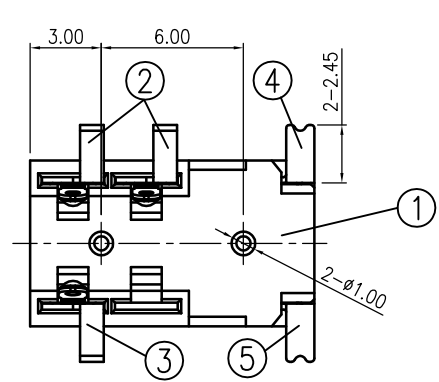
P.C.B layout dimension (Tolerance: ±0.05)

(Recommend min. dimension) (Top view)

: Pad Area

----- : Keep Out Area

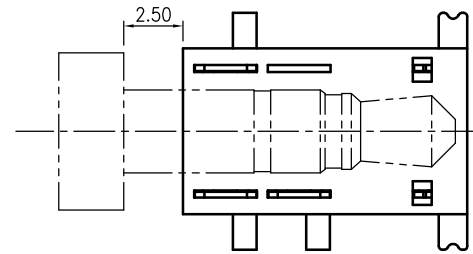
E



REVISIONS					
LTR	DESCRIPTION	DATE	REV.	CHKD.	APVD.

Notes:

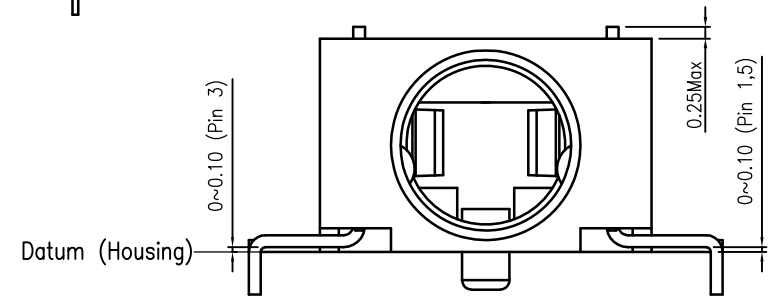
1. Plug position (Schematic drawing 1).



Schematic drawing 1

2. Pin 2,4 terminals must keep Max. 0.12 coplanarity.

3. Pin 1,3,5 terminals (Schematic drawing 2).



Schematic drawing 2

Scale: 2:1

5	TIP SPRING (4)	Copper Alloy t=0.25	MBNi1 μm-Sn3 μm
4	TIP SPRING (2)	Copper Alloy t=0.25	MBNi1 μm-Sn3 μm
3	SPRING TERMINAL (3)	Copper Alloy t=0.25	MBNi1 μm-Sn3 μm
2	SPRING TERMINAL (1/5)	Copper Alloy t=0.25	MBNi1 μm-Sn3 μm
1	HOUSING	1 High Temperature Thermoplastic UL 94V-0	Black

DIMENSION	TOLERANCE	LTR	PART NAME	Q'TY	MATERIAL	REMARK
120~315	±0.50	DWN	李阮龍	DATE	2014.12.23	NAME 3.5mm Miniature Jack
30~120	±0.35	DSND	李阮龍	DATE	2011.11.25	
6~30	±0.22	CHKD	黃健瑋	DATE	2014.12.23	CAT. NO. KM35003A00BPOL_
BELOW 6	±0.16	APVD	郭遠峰	DATE	2014.12.23	
KUNMING ELECTRONICS CO.,LTD.						DWN.NO. A-35003A00BPOL
						1/1 001