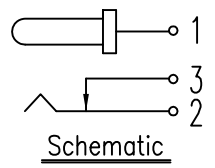
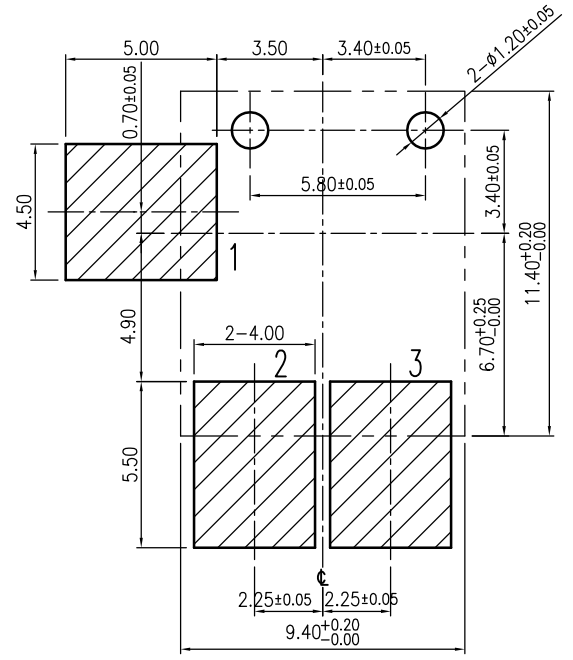
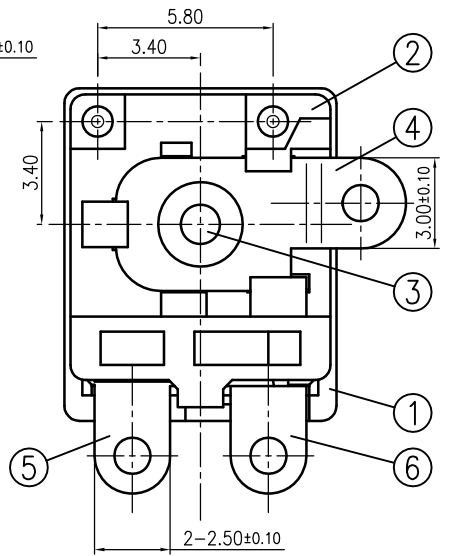
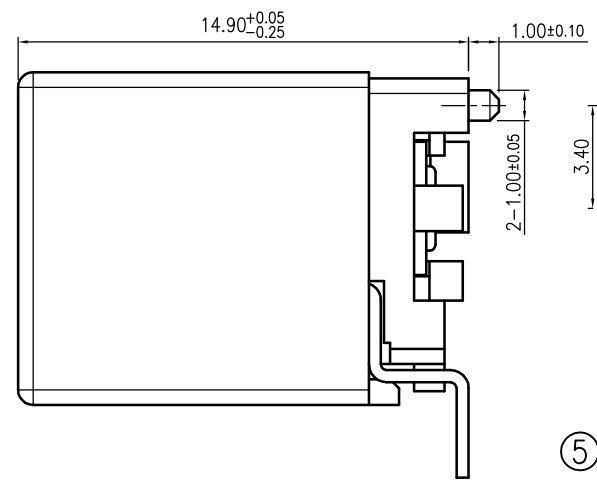
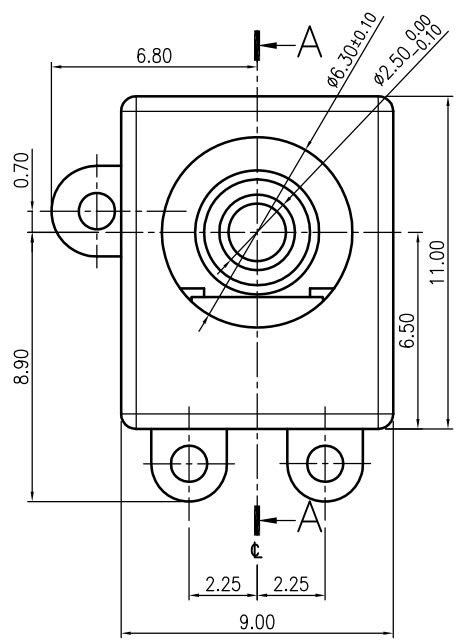
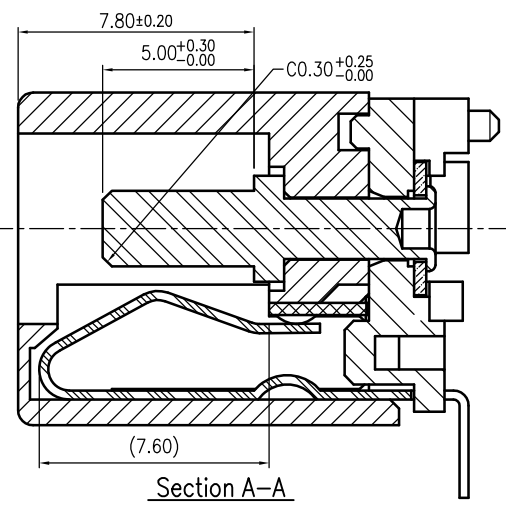
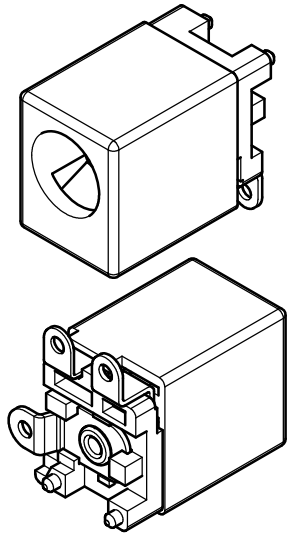


REVISIONS					
LTR	DESCRIPTION	DATE	REV.	CHKD.	APVD.

A
B
C
D
E



: Pad Area
 - - - - - : Keep Out Area
 Recommended PCB Layout(Tolerance:±0.10)



6	TIP SPRING(2)	1	Copper Alloy	t=0.30
5	BREAK TERMINAL(3)	1	Brass	t=0.40
4	TERMINAL(1)	1	Brass	t=0.40
3	PIN	1	Copper	
2	COVER-1	1	High Temperature Thermoplastic UL 94V-0	
1	HOUSING	1	High Temperature Thermoplastic UL 94V-0	

Please refer to color and plating combination list.

LTR	PART NAME	Q'TY	MATERIAL	REMARK
120~315	±0.5	DWN	李阮龍	DATE 2016.02.17
30~120	±0.35	DSND	郭素玲	DATE 2009.02.26
6~30	±0.22	CHKD	郭遠峰	DATE 2016.02.17
BELOW 6	±0.16	APVD	郭遠峰	DATE 2016.02.17

SCALE 4/1
 PROJECTION

NAME DC POWER JACK
 PIN L=5.00 / H=14.90
 CAT. NO. KM02023DS6_

Note: Coplanarity 0.10 Max.

DIMENSION	TOLERANCE	KUNMING ELECTRONICS CO.,LTD.		DWN.NO. A-02023DS6	1/1 001
-----------	-----------	------------------------------	--	--------------------	------------