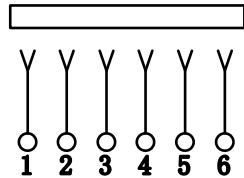
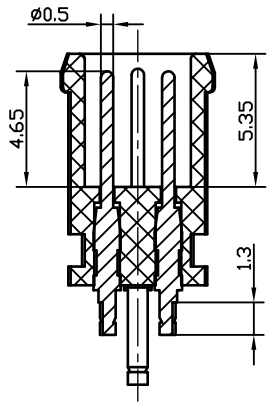
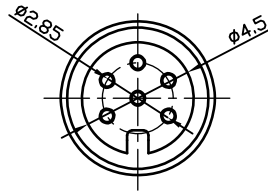
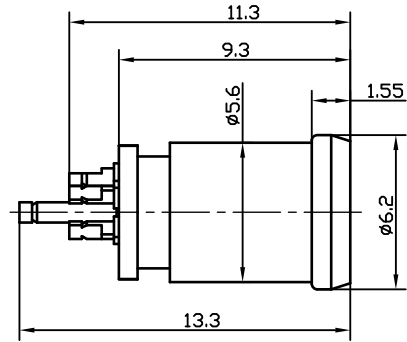


7	8	9	10
REV.	MARK	DESCRIPTION	DATE APPROVED



电路图

PART NO. INFORMATION CODE:

KMM601M N P A B C G1 P
 Number of Poles
 胶芯颜色规格:
 A=蓝色
 B=黑色
 G=绿色
 D=橙色
 R=红色
 W=白色
 Y=黄色
 端子材质:
 C: BRASS
 端子电镀规格:
 *G1=金 1.0u" Gold Flash
 G3=金 5u"
 G4=金 10u"
 G5=金 15u"

规格参数

- 电气性能参数
 - 额定电流: 1.5A(Signal Pin)
 - 额定电压: 200V AC
 - 接触电阻: 30mΩ MAX
 - 绝缘阻抗: 100MΩ MIN
 - 耐压: 1000V AC (50Hz) 1 min
- 机械性能参数
 - 寿命: 3000 CYCLES MIN
 - 插拔力: 5N~35N
- 工作温度: -30°C - +70°C
- 盐雾试验: 满足48H(小时)

M6-2P MALE(RED,红色)	M6-3P MALE(YELLOW,黄色)	M6-4P MALE(BLUE,蓝色)	M6-5P MALE(GREEN,绿色)	M6-6P MALE(BLACK,黑色)

				TOLERANCE UNLESS OTHERWISE SPEC.						MODEL TYPE: M6-2-6P MALE PLUG(公头)				
				BASIC DIMENSIONS		TOLERANCES						PART NO.:		
				L ≤ 4		±0.25						KMM601M_PA.CG_P		
				4 < L ≤ 16		±0.35						DWG NO.:		
				16 < L ≤ 63		±0.45						VIEW:		
				63 < L		±0.55						UNIT: mm		
③	LONG CONTACT	1	COPPER ALLOY	Au-PLATED			DSND	X.J XUE	DATE	2017.09.26	SCALE: N/A	WEIGHT	SHEET	REVISION
②	SHORT CONTACT	5	COPPER ALLOY	Au-PLATED			DRWN	F.R CHEN	DATE	2017.09.26	VIEW:	N/A	1/1	A0
①	HOUSING	1	PBT UL94V-0	COLOR BY ORDER			CHKD	F.R CHEN	DATE	2017.09.26	UNIT: mm			
NO.	PART NAME	TER' NO.	QTY'	MATERIAL	REMARK	ANGULAR DIMENSIONS: ±3°	APPD	Y.H LONG	DATE	2017.09.26	SIZE: A4			