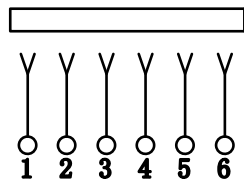
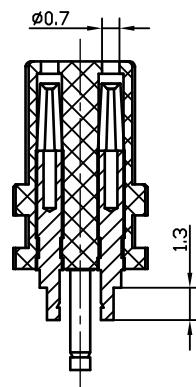
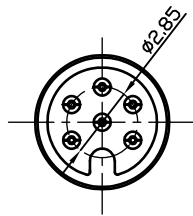
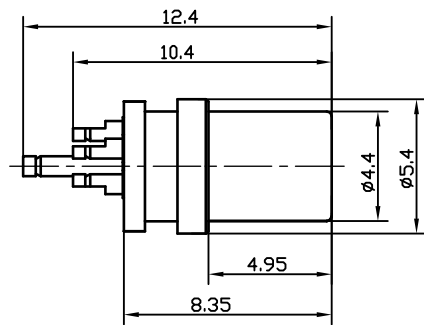


7	8	9	10	
REV.	MARK	DESCRIPTION	DATE	APPROVED



电路图

PART NO. INFORMATION CODE:

KMM602F N P A B C G1 P  
 Number of Poles  
 胶芯颜色规格:  
 A=蓝色  
 B=黑色  
 G=绿色  
 D=橙色  
 R=红色  
 W=白色  
 Y=黄色  
 端子材质:  
 C: BRASS  
 端子电镀规格:  
 \*G1=金 1.0u"  
 G3=金 5u"  
 G4=金 10u"  
 G5=金 15u"

规格参数

1.电气性能参数

- 1.1 额定电流：1.5A(Signal Pin)
- 1.2 额定电压：200V AC
- 1.3 接触电阻：30mΩ MAX
- 1.4 绝缘阻抗：100MΩ MIN
- 1.5 耐压：1000V AC (50Hz) 1 min

2.机械性能参数

- 2.1 寿命：3000 CYCLES MIN
- 2.2 插拔力：5N~35N
- 3.工作温度：-30°C - +70°C
- 4.盐雾试验：满足48H(小时)

M6-2P FEMALE(RED,红色)	M6-3P FEMALE(YELLOW,黄色)	M6-4P FEMALE(BLUE,蓝色)	M6-5P FEMALE(GREEN,绿色)	M6-6P FEMALE(BLACK,黑色)

					TOLERANCE UNLESS OTHERWISE SPEC.					MODEL TYPE: M6-2~6P FEMALE PLUG(母头)							
					BASIC DIMENSIONS		TOLERANCES			PART NO.:							
					L ≤ 4		±0.25			KMM602F_PA.CG.P							
					4 < L ≤ 16		±0.35			DWG NO.:							
					16 < L ≤ 63		±0.45			VIEW:							
					63 < L		±0.55			UNIT: mm							
③	LONG CONTACT		1	COPPER ALLOY	Au-PLATED	DSND					X.J XUE	DATE	2020.04.26	SCALE: N/A	WEIGHT	SHEET	REVISION
②	SHORT CONTACT		5	COPPER ALLOY	Au-PLATED	DRWN					X.J XUE	DATE	2020.04.26	VIEW:	N/A	1/1	A0
①	HOUSING		1	PBT UL94V-0	COLOR BY ORDER	CHKD					F.R CHEN	DATE	2020.04.26	UNIT: mm	WEIGHT	SHEET	REVISION
NO.	PART NAME	TER' NO.	QTY'	MATERIAL	REMARK	APPD					Y.H LONG	DATE	2020.04.26	SIZE: A4	N/A	1/1	A0