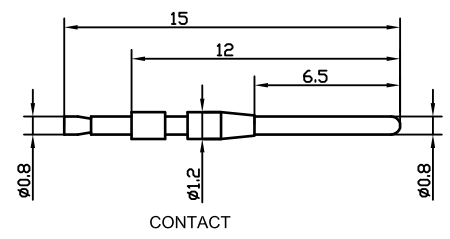
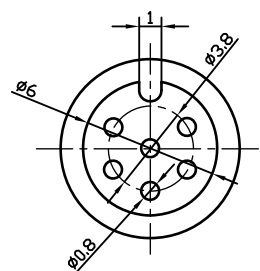
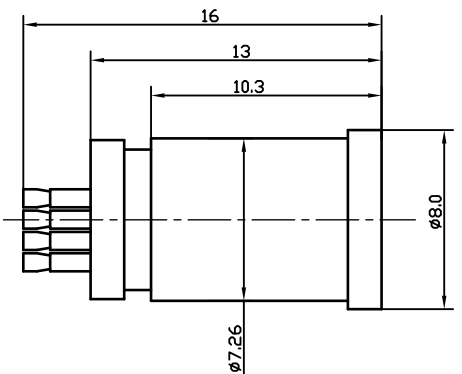
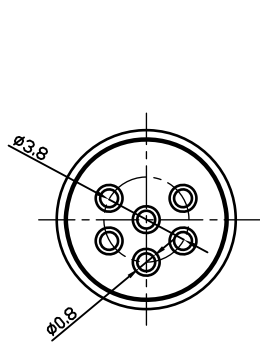
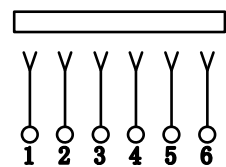


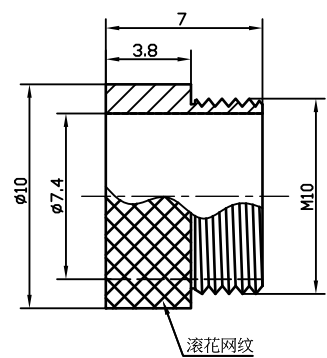
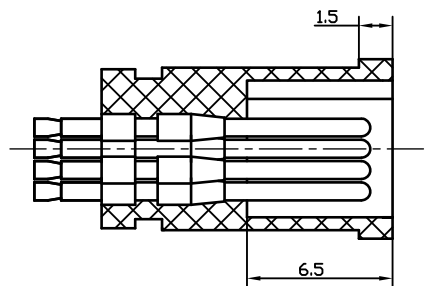
REV.	MARK	DESCRIPTION	DATE	APPROVED



CONTACT



电路图



滚花网纹
THREAD SLEEVE

规格参数

- 1.电气性能参数
 - 1.1 额定电流：2A
 - 1.2 额定电压：200V AC
 - 1.3 接触电阻：30mΩ MAX
 - 1.4 绝缘阻抗：100MΩ MIN
 - 1.5 耐压：300V AC (50Hz) 1 min
- 2.机械性能参数
 - 2.1 寿命：3000 CYCLES MIN
 - 2.2 插拔力：5N~40N
- 3.工作温度：-30°C - +70°C
- 4.盐雾试验：满足48H(小时)

PART NO. INFORMATION CODE:

KMM801M N P A B C G1 P
 Number of Poles: N, P, A, B, C, G1, P
 胶芯颜色规格: A=蓝色, B=黑色, G=绿色, D=橙色, R=红色, W=白色, Y=黄色
 螺纹套材质: C: BRASS
 端子电镀规格: *G1=金 1.0u", G3=金 5u", G4=金 10u", G5=金 15u", Gold Flash

M8-2P MALE PLUG	M8-3P MALE PLUG	M8-4P MALE PLUG	M8-5P MALE PLUG	M8-6P MALE PLUG

TOLERANCE UNLESS OTHERWISE SPEC.	
BASIC DIMENSIONS	TOLERANCES
L ≤ 4	±0.25
4 < L ≤ 16	±0.35
16 < L ≤ 63	±0.45
63 < L	±0.55

NO.	PART NAME	TER' NO.	QTY'	MATERIAL	REMARK
③	THREAD SLEEVE		1	COPPER ALLOY/STEEL	Ni-PLATED
②	CONTACT		6	BRASS	Au-PLATED/Sn-PLATED
①	HOUSING		1	PBT UL94V-0	COLOR BY ORDER

DSND	X.J XUE	DATE	2017.09.26	SCALE: N/A
DRWN	F.R CHEN	DATE	2017.09.26	VIEW:
CHKD	F.R CHEN	DATE	2017.09.26	UNIT: mm
APPD	Y.H LONG	DATE	2017.09.26	SIZE: A4

MODEL TYPE:	M8-2-6P MALE PLUG(公头)	
PART NO.:	KMM801M_PA.CG.P	
DWG NO.:		
WEIGHT	SHEET	REVISION
N/A	1/1	A0