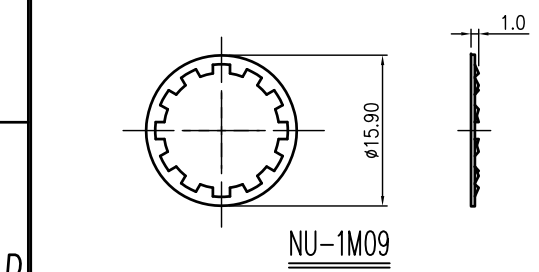
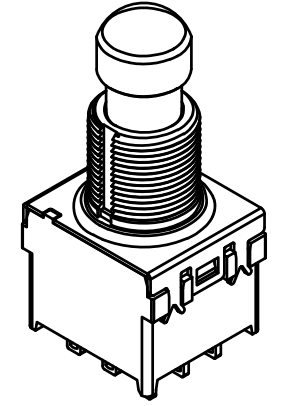
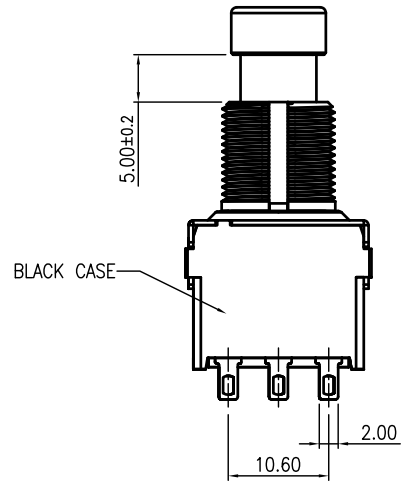
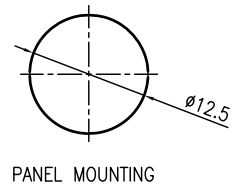
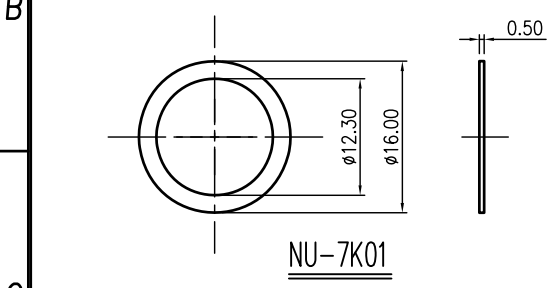
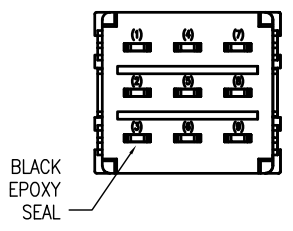
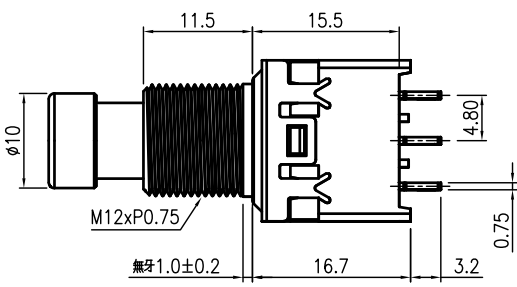
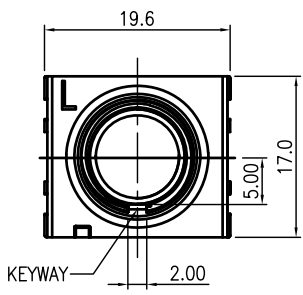
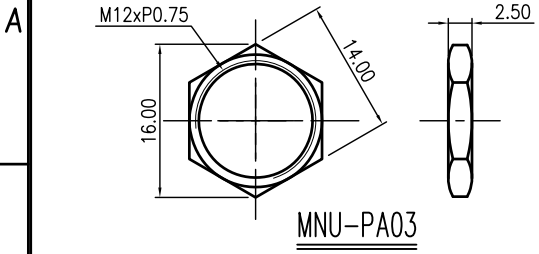


REVISIONS					
LTR	DESCRIPTION	DATE	REV.	CHKD.	APVD.



PART NO.	PART NAME	Q'TY	
1	MNU-PA03	M12x0.75 SI NUTS	2
2	NU-7K01	WASHER	1
3	NU-1M09	TOOTH WASHER	1

SWITCH FUNCTION		Term. Comm.
ON	ON	2-1,5-4,8-7 ON 2-3,5-6,8-9 ON

SPECIFICATIONS
 RATING: DC9V,1A
 CONTACT RESISTANCE:30mΩ MAX.
 INSULATION RESISTANCE:DC 500V 100MΩ MIN.
 DIELECTRIC STRENGHT:500V RMS @ SEA LEVEL.
 OPERATING FORCE : 3.0±0.8Kgf
 OPERATING TEMP : -10°C ~+70°C
 MECHANICAL LIFE:30,000 MAKE-AND-BREAK CYCLES
 RoHS & Lead Free

DWN	陳衛兵	DATE	2016.06.20	SCALE	1.25/1	NAME	USE FOR PEDAL-SWITCH	
0.00	±0.25	DSND	IRENE	DATE	2015.12.08		PROJECTION	CAT. NO.
0.0	±0.40	CHKD	張啟濤	DATE	2016.06.20	UNIT:mm		KMSWFK3LP20
ANGLE	±5°	APVD	陳宗碧	DATE	2016.06.20		DWN.NO.	A-SWFK3LP20
DIMENSION	TOLERANCE	KUNMING ELECTRONICS CO.,LTD.				A-SWFK3LP20		001

The raw material specified by Sony should meet SS-00259 requirement of the latest version. When such material is used, it should be supplied by Sony designated suppliers.